

The logo for REO, consisting of the letters 'R', 'E', and 'O' in a stylized, white, sans-serif font. The 'R' and 'E' are connected at the top, and the 'O' is a simple circle. The logo is set against a dark blue rectangular background.

REO

Liquid-cooled components

Our three cooling variants

Indirect cooling with heat sink:

This version the heat sinks are integrated into the components and directly fixed to the heat sources in order to enable a higher degree of efficiency. This design is particularly efficient at higher power levels.



Schematic diagram of **indirect cooling**

- Cooling block
- Winding
- Core

Indirect cooling with coldplate:

In this version a heat sink is attached externally to cool it. This is a more economical method for low power levels and smaller components.

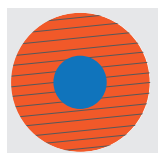


Schematic diagram of **Coldplate**

- Cooling block
- Winding
- Core

Direct cooling with waveguides:

In addition to its standard indirect cooling method REO now offers the direct cooling method, which enhances cooling efficiency even more. The direct cooling uses waveguides, which includes the conductive material as well as the cooling fluid (water/glycol). The use of this method provides optimal cooling.



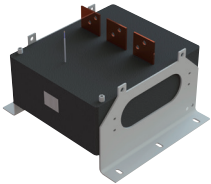
Schematic diagram of direct cooling

- Cooling liquid
- Conductive material

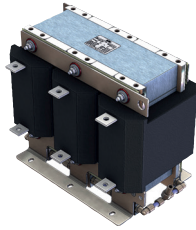
Liquid-cooled chokes

Advantages

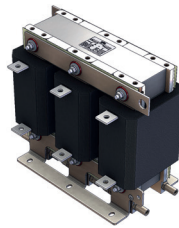
- Low surface temperature
- Increased life time
- Size reduction



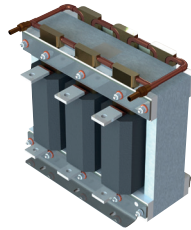
CNW MD 806



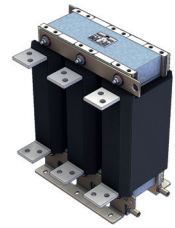
CNW MD 953



CNW MD 903



CNW MD 835



CNW MD 854



NNT MD 953



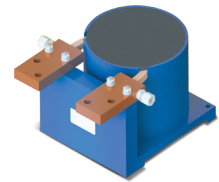
CNW MD 854



CNW MD 903



CNW MD 933



NTT LD-DH 100

Technical data

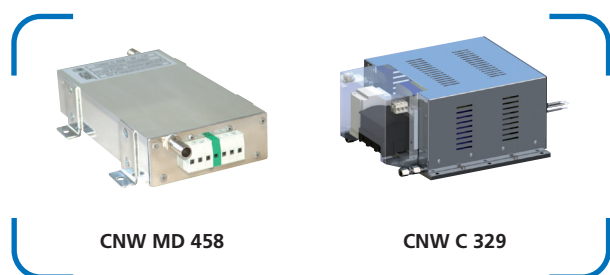
Liquid-cooled chokes*						
Type	Product group	Rated current	Voltage	Design	Protection	Cooling type
CNW MD 806	Dv/dt Choke	100 - 1200 A	500 - 800 V	Encapsulation	IP00	Indirect cooling
CNW MD 953	Mains choke	200 - 1200 A	3x400 V (3x690 V)	Partial Encapsulation	IP00	Indirect cooling
CNW MD 903	Mains choke	200 - 1200 A	3x400 V (3x690 V)	Partial Encapsulation	IP00	Indirect cooling
CNW MD 835	5-Limb Motor choke	450 - 700 A	3x500 V	Partial Encapsulation	IP00	Indirect cooling
CNW MD 854	Motor choke	200 - 1200 A	3x400 V (3x690 V)	Partial Encapsulation	IP00	Indirect cooling
NNT MD 953	Mains choke	200 - 1200 A	3x400 V (3x690 V)	Encapsulation	IP00	Indirect cooling
CNW MD 854	Motor choke	6 - 70 A	500 V	Encapsulation	IP 20 - IP 65	Cold Plate
CNW MD 903	Mains choke	6 - 70 A	500 V	Encapsulation	IP 20 - IP 65	Cold Plate
CNW MD 933	Sinusoidal filter	6 - 70 A	500 V	Encapsulation	IP 20 - IP 65	Cold Plate
NTT LD-DH 100	Snubberchoke	500 - 2500 A	bis 3000 V	Encapsulation	IP00	Direct cooling

*All products are not in stock

Liquid-cooled filter/ combinations

Advantages

- Low surface temperature
- Use of cooling surfaces possible by the customer
- Size reduction



CNW MD 458

CNW C 329

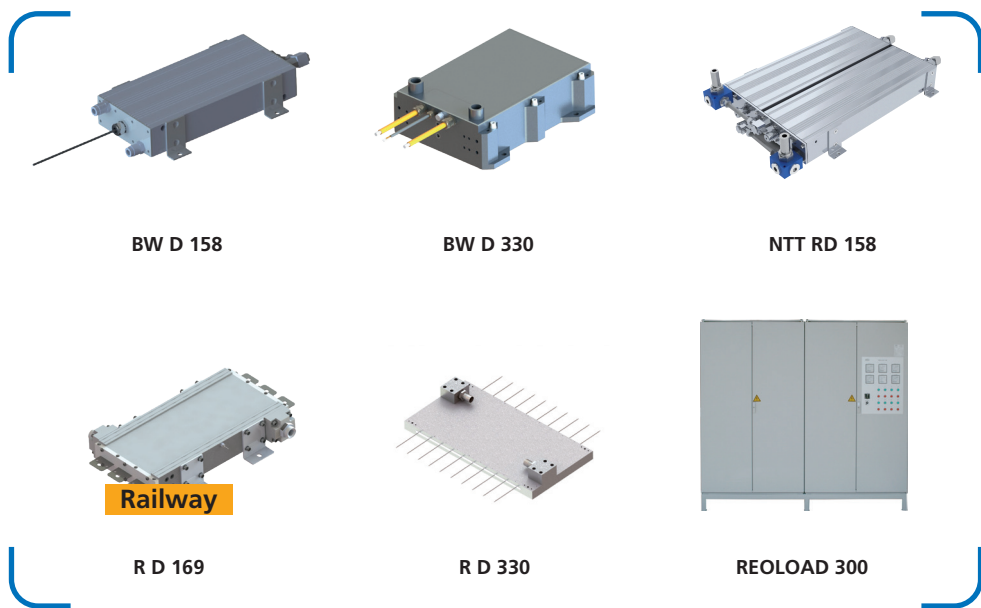
Technical data

Liquid-cooled filter/ combinations*						
Type	Product group	Rated current	Voltage	Design	Protection	Cooling type
CNW MD 458	Mains filter	3 - 64 A	480 V	Housing	IP20	Indirect cooling
CNW C 329	Liquid-cooled Combination	10 - 180 A	500 V	Housing	IP42	Indirect cooling

Liquid-cooled resistors

Advantages

- Minimierung der Baugröße bis zu 80%
- Hohe Effizienz
- Geräuscharm



Technical data

Liquid-cooled resistors*							
Type	Product group	Rated current	Power	Voltage	Design	Protection	Cooling type
BW D 158	Braking resistor	-	1000 - 60000 W	1000 V	-	IP00	Indirect cooling
BW D 330	Braking resistor	-	15000 - 60000 VA	800 V	-	IP00	Indirect cooling
NTT RD 158	Railway application	-	2600 W	4200 V	-	IP00	Indirect cooling
R D 169	Loading resistor	-	4000 - 6000 W	690 V	-	IP00	Indirect cooling
R D 330	Loading resistor	-	30.000 -160.000 W	500 V	-	IP00	Indirect cooling
REOLOAD 300	Resistive loads	431000 W	-	400 - 1000 V	Switch cabinet	IP 20 - IP 54	Indirect cooling

*All products are not in stock

REO AG
Brühler Straße 100 · D-42657 Solingen
Tel.: +49 (0)212 8804 0 · Fax: +49 (0)212 8804 188

E-Mail: info@reo.de
Internet: www.reo.de



DIVISIONS:

REO Vibratory Feeding and Power Electronics Division

Brühler Straße 100 · D-42657 Solingen
Tel.: +49 (0)212 8804 0 · Fax: +49 (0)212 8804 188
E-Mail: info@reo.de

REO Train Technologies Division

Erasmusstraße 14 · D-10553 Berlin
Tel.: +49 (0)30 3670236 0 · Fax: +49 (0)30 3670236 10
E-Mail: zentrale.berlin@reo.de

REO Drives Division

Holzhausener Straße 52 · D-16866 Kyritz
Tel.: +49 (0)33971 485 0 · Fax: +49 (0)33971 485 90
E-Mail: zentrale.kyritz@reo.de

REO Medical and Current Transformer Division

Schuldholzinger Weg 7 · D-84347 Pfarrkirchen
Tel.: +49 (0)8561 9886 0 · Fax: +49 (0)8561 9886 40
E-Mail: zentrale.pfarrkirchen@reo.de

REO Test and PowerQuality Division

Brühler Straße 100 · D-42657 Solingen
Tel.: +49 (0)212 8804 0 · Fax: +49 (0)212 8804 188
E-Mail: info@reo.de

PRODUCTION + SALES:

India

REO GPD INDUCTIVE COMPONENTS PVT. LTD
E-Mail: info@reogpd.com · Internet: www.reo-ag.in

USA

REO-USA, Inc.
E-Mail: info@reo-usa.com · Internet: www.reo-usa.com

SALES:

China

REO Shanghai Inductive Components Co., Ltd
E-Mail: info@reo.cn · Internet: www.reo.cn

France

REO VARIAC S.A.R.L.
E-Mail: reovariac@reo.fr · Internet: www.reo.fr

Great Britain

REO (UK) Ltd.
E-Mail: main@reo.co.uk · Internet: www.reo.co.uk

Italy

REO ITALIA S.r.l.
E-Mail: info@reoitalia.it · Internet: www.reoitalia.it

Poland

REO CROMA Sp.zo.o
E-Mail: croma@croma.com.pl · Internet: www.croma.com.pl

Spain

REO ESPAÑA 2002 S.A.
E-Mail: info@reospain.com · Internet: www.reospain.com

Switzerland

REO ELEKTRONIK AG
E-Mail: info@reo.ch · Internet: www.reo.ch

Turkey

REOTURKEY ELEKTRONIK San. ve Tic. Ltd. Şti.
E-Mail: info@reo-turkey.com · Internet: www.reo-turkey.com